

ADAM12 Antibody (N-Terminus)
Goat Polyclonal Antibody
Catalog # ALS12451**Specification**

ADAM12 Antibody (N-Terminus) - Product Information

Application	WB, IHC-P, E
Primary Accession	O43184
Reactivity	Human
Host	Goat
Clonality	Polyclonal
Calculated MW	100kDa KDa
Dilution	WB~~1:1000 IHC-P~~N/A E~~N/A

ADAM12 Antibody (N-Terminus) - Additional Information**Gene ID** 8038**Other Names**

Disintegrin and metalloproteinase domain-containing protein 12, ADAM 12, 3.4.24.-, Meltrin-alpha, ADAM12, MLTN

Target/Specificity

Human ADAM12. This antibody is expected to recognise both the longer membrane-bound form of human ADAM12 (NP_003465.3) and the shorter soluble ADAM12 splice isoform (NP_067673.2). This antibody does not cross-react with other ADAMS.

Reconstitution & Storage

Store at -20°C. Minimize freezing and thawing.

Precautions

ADAM12 Antibody (N-Terminus) is for research use only and not for use in diagnostic or therapeutic procedures.

ADAM12 Antibody (N-Terminus) - Protein Information**Name** ADAM12**Synonyms** MLTN**Function**

Involved in skeletal muscle regeneration, specifically at the onset of cell fusion. Also involved in macrophage-derived giant cells (MGC) and osteoclast formation from mononuclear precursors (By similarity).

Cellular Location

[Isoform 1]: Cell membrane; Single-pass type I membrane protein [Isoform 3]: Secreted.

Tissue Location

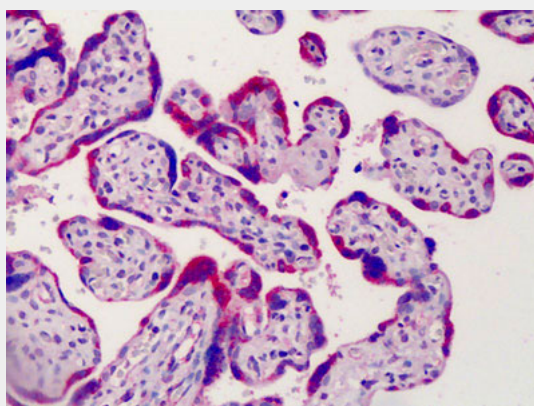
Isoform 1 is expressed in placenta and skeletal, cardiac, and smooth muscle. Isoform 2 seems to be expressed only in placenta or in embryo and fetus. Both forms were expressed in some tumor cells lines. Not detected in brain, lung, liver, kidney or pancreas

ADAM12 Antibody (N-Terminus) - Protocols

Provided below are standard protocols that you may find useful for product applications.

- [Western Blot](#)
- [Blocking Peptides](#)
- [Dot Blot](#)
- [Immunohistochemistry](#)
- [Immunofluorescence](#)
- [Immunoprecipitation](#)
- [Flow Cytometry](#)
- [Cell Culture](#)

ADAM12 Antibody (N-Terminus) - Images



Anti-ADAM12 antibody IHC of human placenta.

ADAM12 Antibody (N-Terminus) - Background

Involved in skeletal muscle regeneration, specifically at the onset of cell fusion. Also involved in macrophage-derived giant cells (MGC) and osteoclast formation from mononuclear precursors (By similarity).

ADAM12 Antibody (N-Terminus) - References

Gilpin B.J.,et al.J. Biol. Chem. 273:157-166(1998).
Gilpin B.J.,et al.Submitted (FEB-2001) to the EMBL/GenBank/DDBJ databases.
Clark H.F.,et al.Genome Res. 13:2265-2270(2003).
Deloukas P.,et al.Nature 429:375-381(2004).
Mural R.J.,et al.Submitted (SEP-2005) to the EMBL/GenBank/DDBJ databases.